

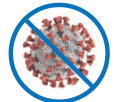
SUPER S.H.O.W.

SAFETY HOSPITAL WORK



CLOSED CIRCUIT ASPIRATOR FOR LARGE VOLUMES OF BIOLOGICAL FLUIDS

Antiviral (**COVID-19** tested)
and antibacterial protection



Cross-Contaminations reduction

Higher safety for users

Multidisciplinary use

Faster working procedures

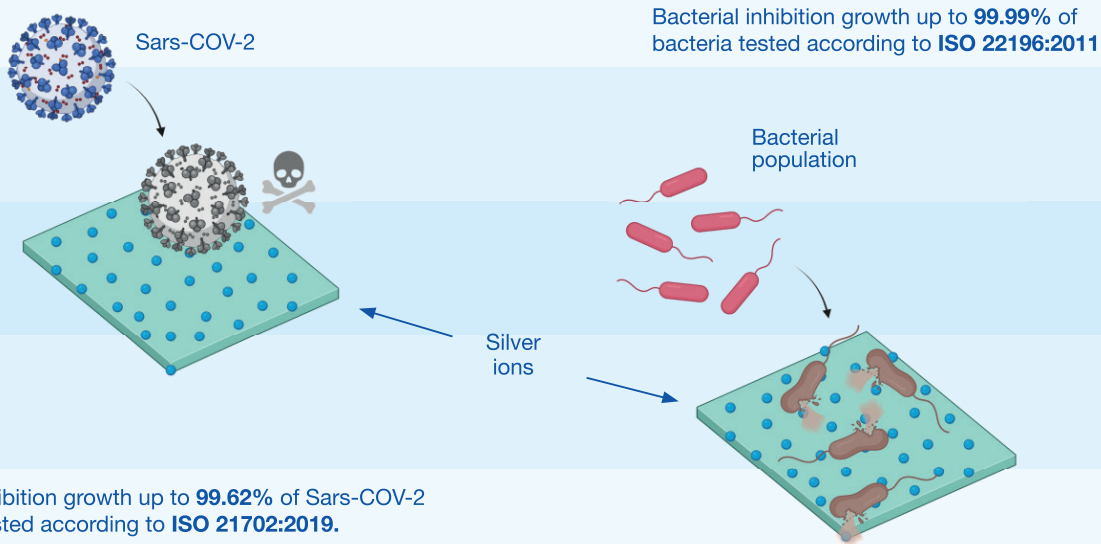
No lifting of loads

Optimization of healthcare personnel

Costs reduction

CROSS-CONTAMINATIONS REDUCTION

Silver ions guarantee a 24-hour antibacterial and antiviral protection which lasts for the entire life of the device.



DISINFECTION, SAFETY AND ENVIRONMENTAL IMPACT



The silver ions technology embedded into the external surface guarantees an effective antiviral and antibacterial action.



Super S.H.O.W. avoids the risk of viral and bacterial contamination of the operator and the environment; this is thanks to the closed-circuit system which eliminates the danger of biological liquids spilling.



The device disinfects infected biological fluids in real time before being discharged.

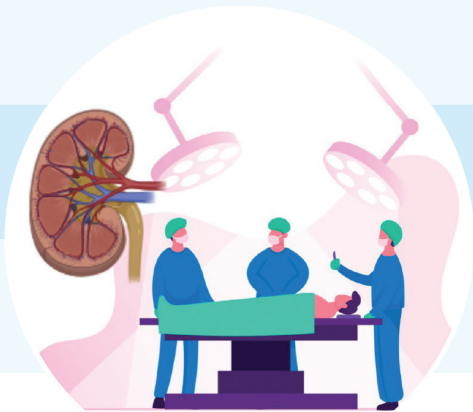


Direct suction facilitates the work of healthcare personnel by avoiding the lifting and displacement of heavy liquid collection bags. The faster workflow allows a better efficiency of the personnel.



Super S.H.O.W. reduces the use and therefore the pollution from disposable plastic containers and the costs of special waste disposal.

APPLICATION FIELDS



Urology Operating Room in **Endoscopic** surgeries (TURP, TURV, PCNL). Up to 50 litres of biological liquids for single surgery.



Orthopaedic Operating Room in **Arthroscopy** surgeries (shoulder, hip, knee). Up to 40 litres of biological liquids for single surgery.

During surgical interventions, Super S.HO.W. allows a rapid emptying of the surgical drape/collection bag, thus facilitating the work of healthcare personnel. It also reduces the time required to clean the operating room between surgeries as, by active suction, the operating field remains much drier.



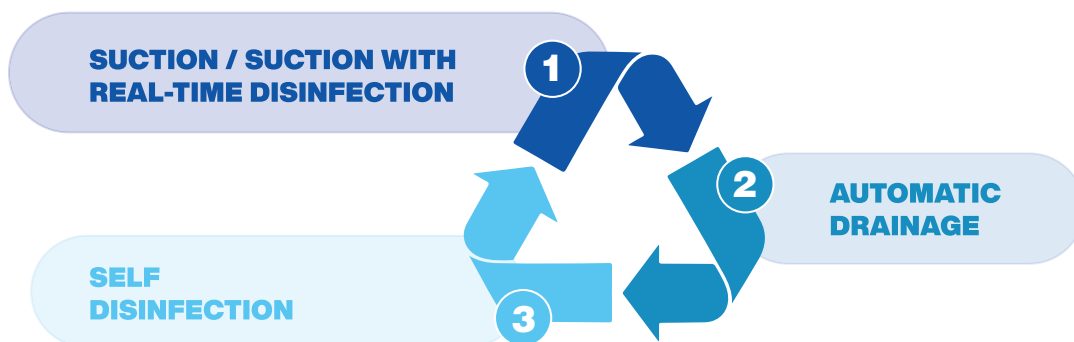
In **intensive Care** Units for emptying **CVVH bags** and **urinometers**. (e.g. 40 liters of ultrafiltrate every 24 hours).



In **Urology Hospitalization** for continuous post operative **bladder washes**. (e.g. 40 liters every 24 hours).

In Intensive Therapy and Urology Wards, Super S.HO.W. helps staff in emptying collection bags, by avoiding the lifting of heavy loads and eliminating the use of disposable containers.

OPERATIVE FUNCTIONS



TECHINCAL SPECIFICATIONS

CONSTRUCTION DETAILS

60 litres capacity tank

Empty weight of 64 kg

Body in shockproof and stainless steel ABS with a silver ions antibacterial and antiviral technology

External dimensions 410 x 567 x 833 mm
(height with handle 1113 mm)

7" colour touch screen

220/230V power supply, 50/60 Hz frequency

Multilingual interface software

REFERENCE STANDARDS

Medical Device, compliant
with Regulation 745/2017



Compliant with standard EN 60601-1-2 (CEI 62.5)

ISO CERTIFICATION

Manufacturer certified UNI CEI EN ISO 13485:2016



IN.CAS. S.r.l. - INNOVAZIONI CASAMICHELE

Via Staffali, 40/A - 37062 - Dossobuono di Villafranca (VR) - Italy

T. +39 045 8601267 — **Fax** +39 045 8601090

e-Mail info@incas-srl.com — **Website** www.incas-show.com

REV - 2021.10